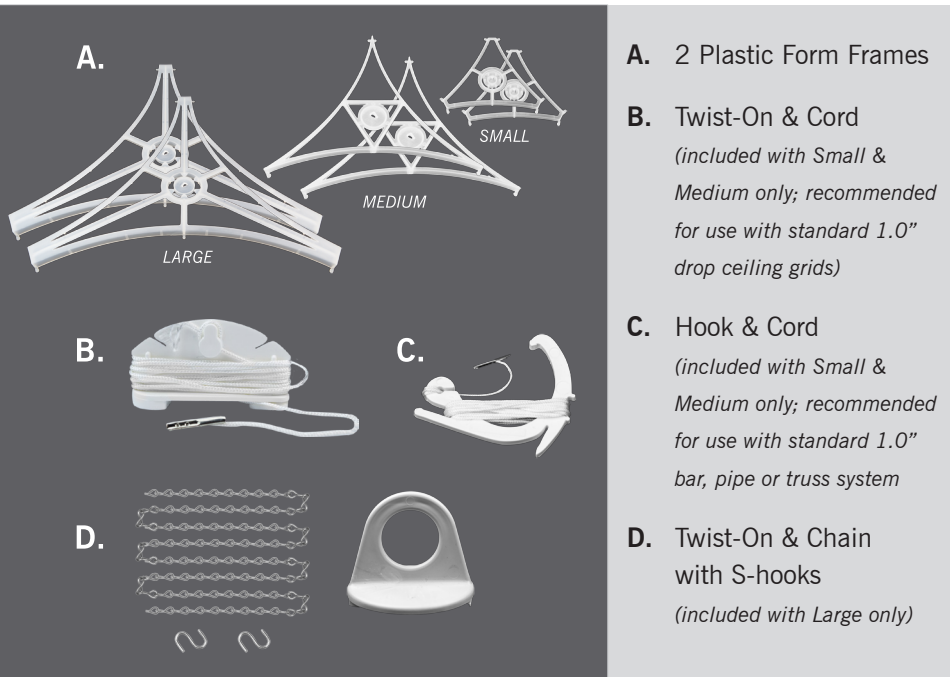


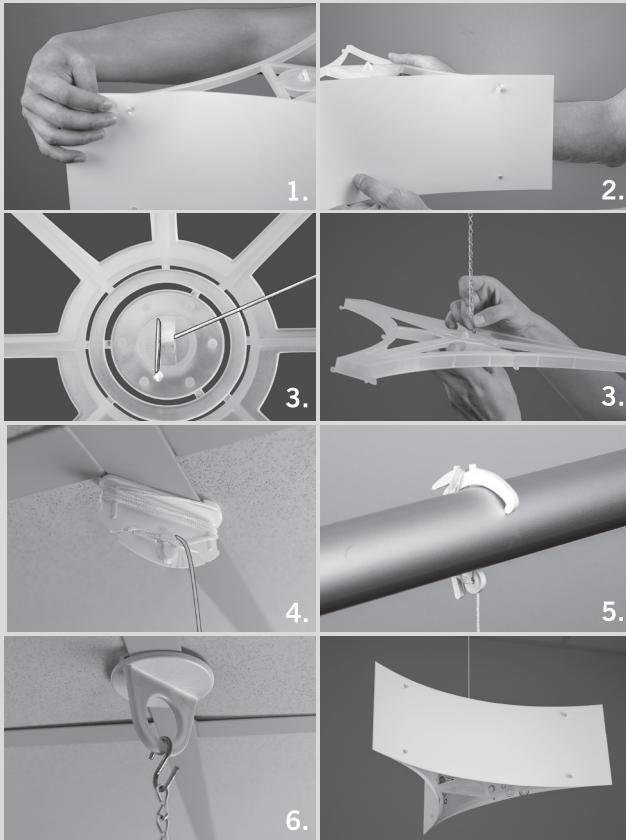
3-SIDED CEILING DANGLER

Assembly Instructions | R1.091316

ASSEMBLY HARDWARE



ASSEMBLY & HANGING



1. Set up the top plastic form frame (A) so it is facing up and the hanging slot is facing upward. Attach the prints by inserting the notches on the plastic form frame through the openings on the prints.
2. Repeat the previous step for the bottom form frame. The middle portion with the hanging slot should be facing downward.
3. Both the twist-on & cord (B) and hook & cord (C) have metal pins at the end. Slide the metal pin through the open hanging slot on the top plastic form frame. For the twist-on & chain (D), use a S-hook to attach the chain to the plastic form frame.

NOTE: It is recommended 2 persons assist in hanging the display.

4. To hang the display using the twist-on, ensure the hanger has enough slack to properly attach. Place the hanger opening horizontally on the drop ceiling grid and then twist clockwise to lock into place.
5. To hang the display using the hook & cord, ensure the hanger has enough slack to properly attach. Place hook over the bar, pipe or truss to connect.
6. To hang the display using the large twist-on, connect the hanger to the drop ceiling grid by twisting the hanger onto the grid with the large opening facing downward. Attach the second S-hook to the large opening then attach chain to the S-hook at desired length.



DISCLAIMER: Intended for indoor use only. Certain displays or environments may result in unsafe conditions. Display weight should not exceed 4.0lb as injury or damage may occur. Structures to which mounting is attached must be evaluated separately, as ceiling structures vary from location to location. Building manufacturer should be consulted concerning strength of ceiling support. Do not mount in direct path of heating or air conditioning ducts as injury or damage may occur. All surfaces used to attach displays should be free of dirt and contaminants and must be in superb structural conditioning. Ensure all hangers are securely attached before hanging any display.

