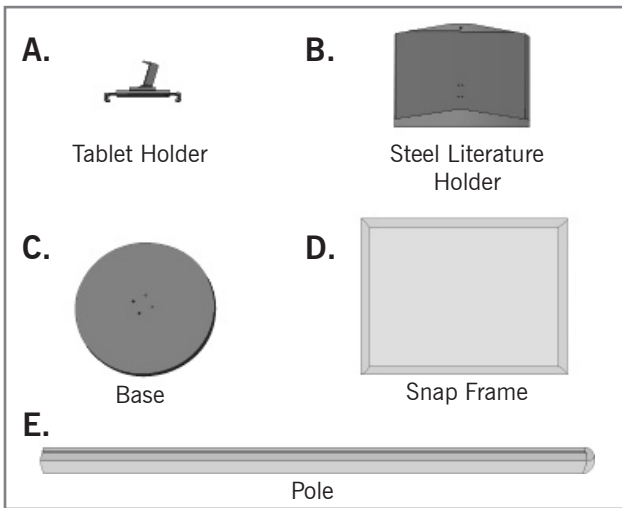


SNAP FRAME INFO BOARD - BUILT-TO-ORDER

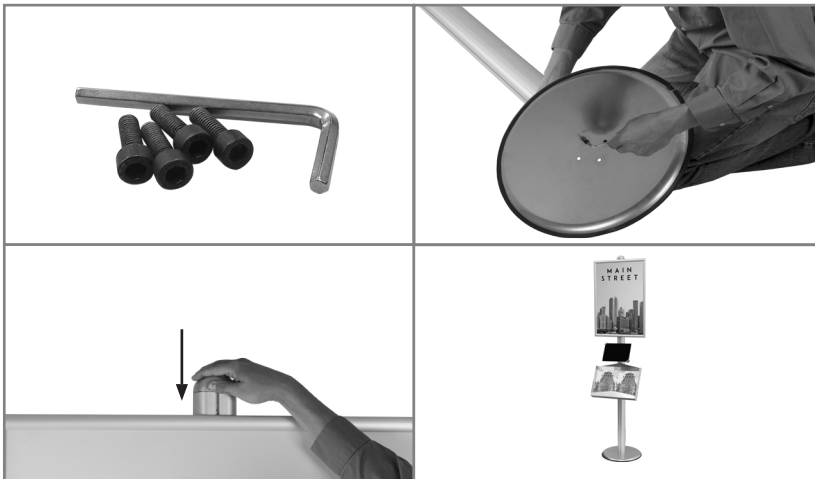
Assembly Instructions | R1.071217

ASSEMBLY HARDWARE



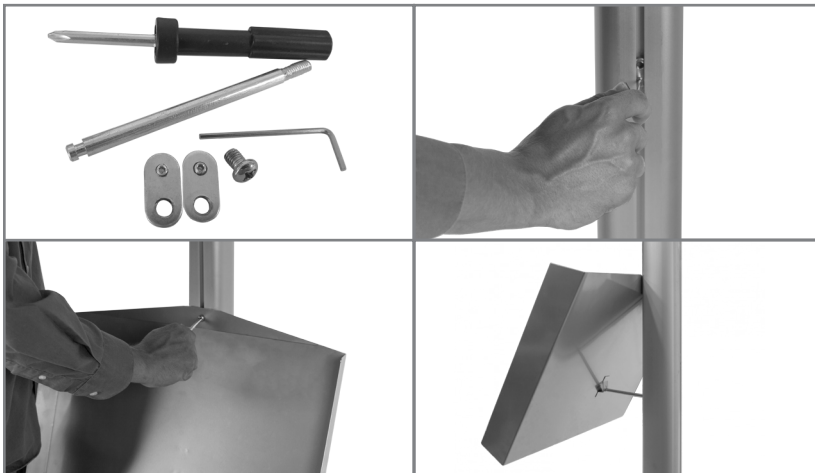
Info Board

INFO BOARD ASSEMBLY



1. Remove plastic cap from pole. Lay base on the ground. Connect pole to the base by inserting screws into openings and rotate clockwise with Allen wrench until tight.
2. **When finished assembling attachments**, slide plastic cap into top of the pole.

STEEL LITERATURE HOLDER ATTACHMENT



1. Slide metal attachment disc down center indentation of the pole. Set to desired height. Use the Allen wrench to tighten the screw into place. Repeat for other attachment, slightly above the other one.
2. Twist metal rod into bottom attachment and rest holder back into the front of the rod. Ensure top attachment is aligned with screw holder in the steel literature holder and screw into place.

TABLET HOLDER ATTACHMENT



1. Slide metal attachment disc down center indentation of the pole, ensuring longer end is facing down. Set to desired height. Use the Allen wrench to tighten the screw into place.
2. Attach tablet holder clasp to attachment, and use the washer and wingnut to connect the two. Attach the tablet holder to the clasp using the remaining wingnut and washer.
3. Attach the tablet to the holder. Adjust the length with the Allen wrench on the back of the holder.

SNAP FRAME ATTACHMENT



1. Slide metal attachment disc down center indentation of the pole. Set to desired height. Using the Allen wrench to tighten a screw into place. Repeat for other attachment, placing slightly above the first.
2. Line up snap frame with screws. Open the frame pulling on the outside of the panels. Secure screws into metal attachments, ensuring they line up.