

ASSEMBLY HARDWARE

A.

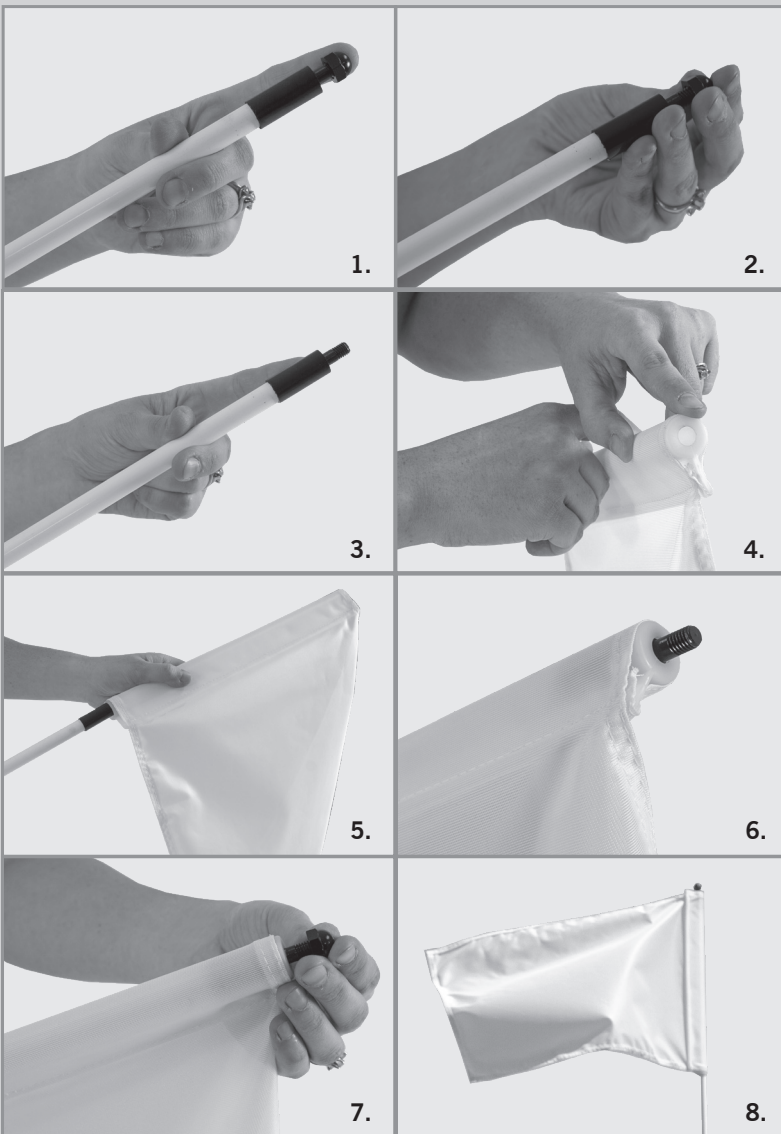


A. Golf Flag

Note: Print may not be included.



FLAG POLE ASSEMBLY



1. Locate the cap for the flagstick.
2. Unscrew the cap.
3. Ensure the flagstick screw is visible.
4. Make sure the golf flag is secure on the tube.
5. Slide the tube down over the flagstick.
6. Ensure the flagstick screw is visible over the tube.
7. Screw the cap back on.
8. Display your golf flag.