

ASSEMBLY HARDWARE

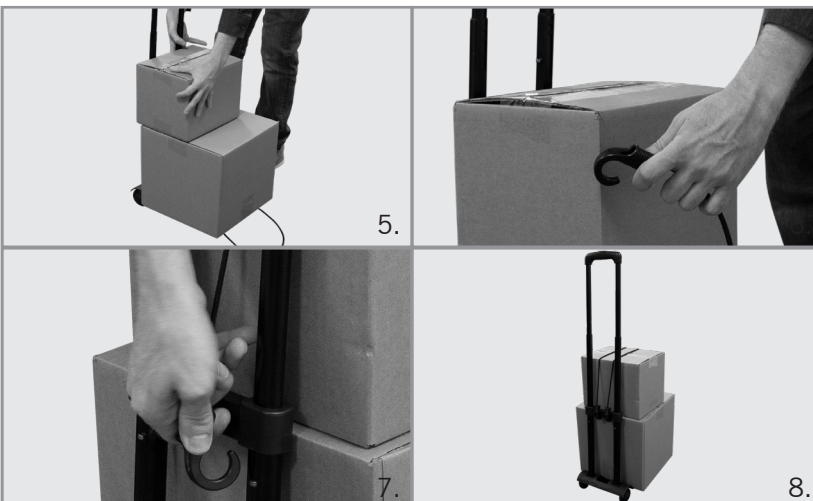


ASSEMBLY: Bag



1. Place the trolley on the floor.
2. Either push or step down on the bottom wheel section and push the top handle button to extend the hardware. It can be collapsed back down by pushing the sections back towards each other.
3. Simply slip the bag sleeve over the handle so it fits securely all the way down the extended trolley handle.
4. For further stability, hook the bungee cords to the D-ring on the sleeve.

ASSEMBLY: Shipping Boxes



1. Place boxes, not weighing over a total of 90.0lb, onto the bottom wheel section of the trolley. Make sure that they are properly balanced before moving forward.
2. Take the bungee cords and stretch the hooks over the top of the boxes so that the cords are firmly secured over them.
3. Pull the cords down below where the trolley handle bar extends so that the cords are wrapped comfortably around the boxes.
4. Hook the end of the bungee cords to the bar on the trolley so that the boxes are safely positioned.



Disclaimer: This product was made to withstand no more than 90.0lb of weight. User must read and observe assembly instructions. If this is not done correctly, it may result in damage to the unit, injury, or death, and all warranties will be void.

