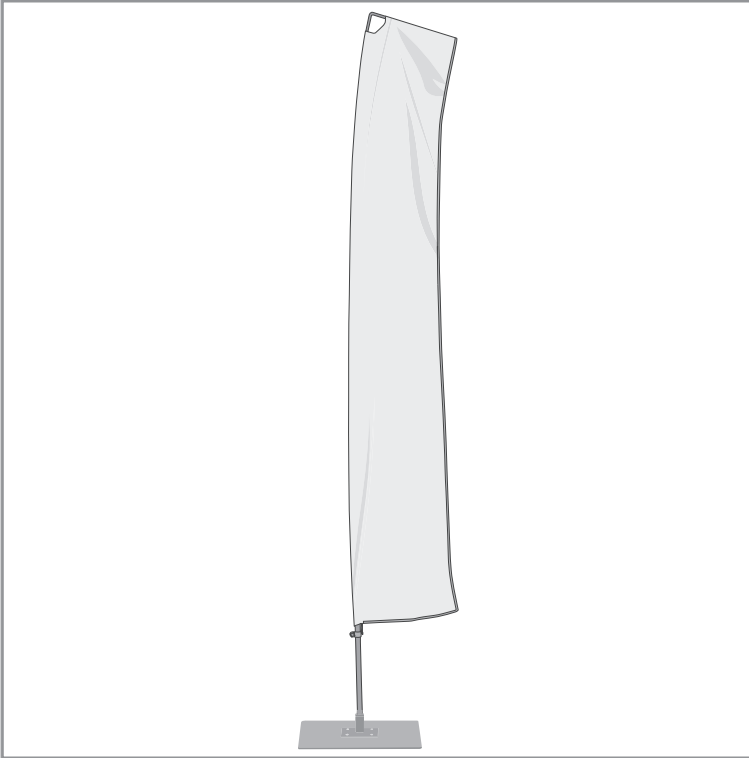


# Rectangular Flag with Banner Arm

Assembly Instructions | R1.031518

## ASSEMBLY HARDWARE



**NOTE - THE AMOUNT OF POLES ARE DETERMINED BY THE SIZE OF THE FLAG**

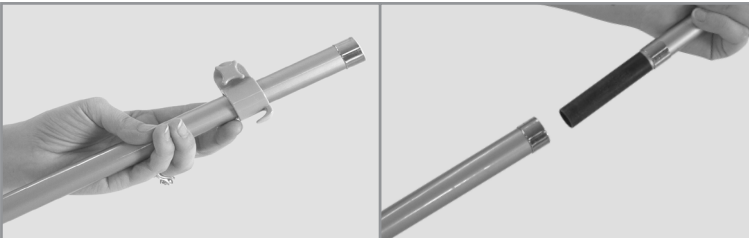
### Wind Speed Recommendations:

- Single-Reverse Flags:  
55-63mph (10bft)
- Double-Sided Flags:  
39-46mph (8bft)



Clamp

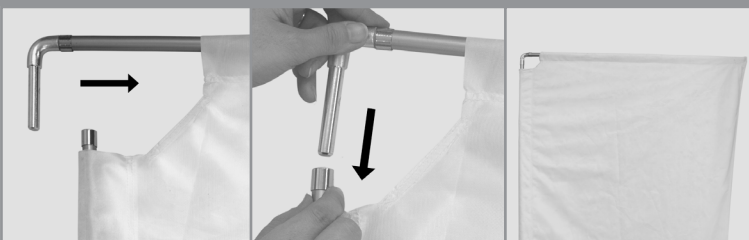
## ASSEMBLY



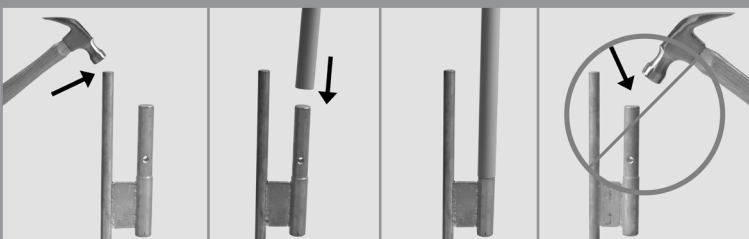
1. Assemble the pole set. Attach the poles together with the smallest-diameter pole at the top and the largest-diameter pole at the bottom.



2. Slide the print onto the pole by passing the pole through the sleeve on the side.



3. Put the banner arm through the pole sleeve at the top. Connect it to the top pole.
4. Hook the tab on the bottom of the print to the clamp on the bottom of the pole (1st picture). Adjust clamp position and tighten at a location where print will be fully taut. Pull print taut and attach tab to the clamp.



### Ground Stake Assembly

1. To use the ground stake base, use a hammer to push the taller end of the stake base into the soil. Do not use a hammer on the shorter portion of the stake base – damage to the base may occur.
2. Install the pole set by seating it on the smaller end of the stake base.

Do not fly this product in wind gusts exceeding what is listed below and/or thunderstorms. Single-reverse flag: up to 63mph. Double-sided flag: up to 46mph. Do not use near overhead wires and allow a 4'-12' radius from base for flag clearance depending on size. User must read and observe assembly instructions. If this is not done correctly it may result in damage to the unit, injury, or death, and all warranties will be void. All warranties will be void if this product is used with any flag or hardware not produced by us.

