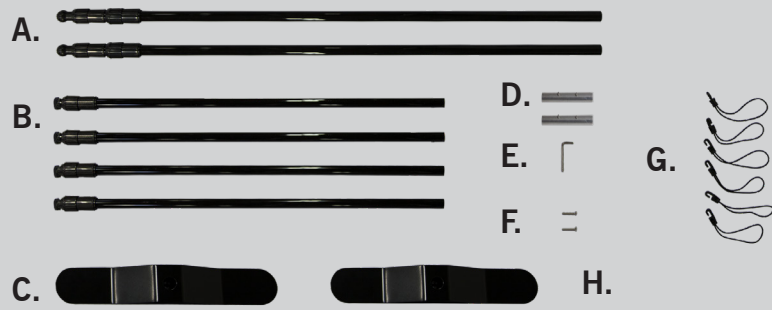


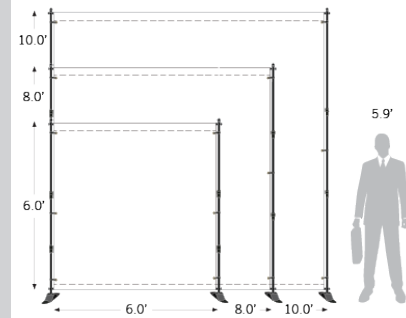
Large Adjustable Backdrop Stand

Assembly Instructions | R1.062019

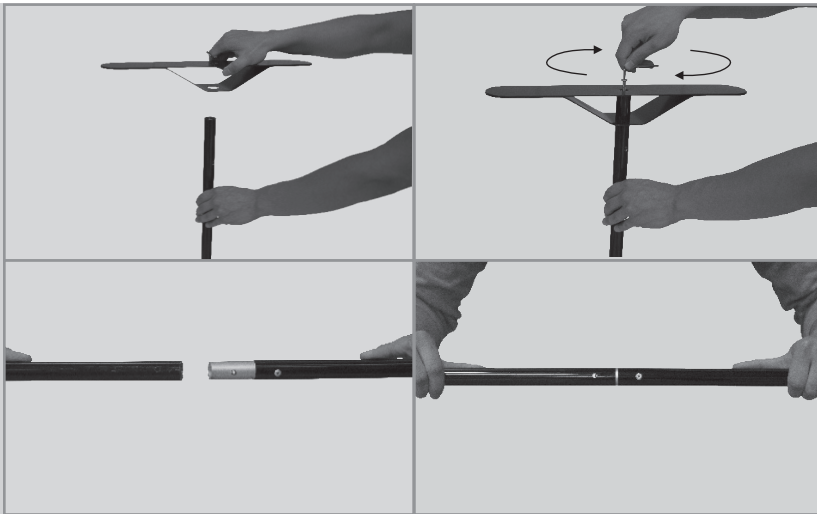
ASSEMBLY HARDWARE



- A. Vertical Aluminum Poles
- B. Horizontal Poles
- C. Metal Feet
- D. Metal Connectors
- E. Allen Wrench
- F. Flat Head Screws
- G. Elastic Banner Cords



ASSEMBLY



NOTE – It's recommended two people assemble the display on a clean surface.

1. Assemble the vertical aluminum poles.
 - a. Insert a vertical aluminum pole (A) into the opening on one of the metal feet (C).
 - b. Place one of the flat head screws (F) into the underside of one of the metal foot.
 - c. Rotate clockwise with Allen wrench (E) to tighten.
 - d. Repeat for the other foot.
2. Assemble the horizontal aluminum poles.
 - a. Insert one of the metal connectors (D) into one of the horizontal poles (B). Press down on the connector's button and slide into the pole until the button clicks into place.
 - b. Connect another pole to the other end of the connector.
 - c. Repeat this process to assemble the other horizontal poles.



3. Determine length of horizontal poles.
 - a. Spread out the print on the ground until the pole sleeve is completely flat.
 - b. Expand the horizontal poles until they are 2 inches longer than the pole sleeve.
 - c. Secure the poles by tightening the notches at the determined points. Make sure both horizontal poles are the same length.
4. Displaying the print.
 - a. Insert one of the assembled horizontal poles into the bottom pole sleeve.
 - b. Attach the horizontal pole to the bottom of each of the vertical poles by securing it into place with 2 screw knobs. Repeat for top pole.
 - c. Extend vertically by untightening the vertical poles and expanding until desired height is achieved.
 - d. Retighten when print is taut.
 - e. Slide an elastic banner cord (G) through a grommet and then secure. Repeat for other grommets.

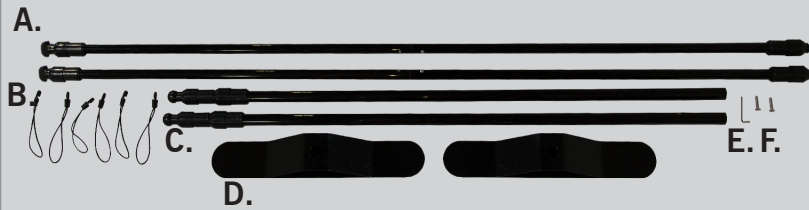
DISCLAIMER: When using this product outside, place at least 25lb of weight (equivalent to 1 PVC Water Weight 2gal filled) on each foot. Do not display this product in extreme winds and/or thunderstorms. User must read and observe assembly instructions. If this is not done correctly it may result in damage to the unit, injury, or death, and all warranties will be void. All warranties will be void if the hardware is used with any banner not produced by us.



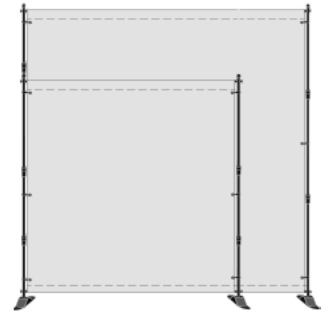
Small Adjustable Backdrop Stand

Assembly Instructions | R1.062019

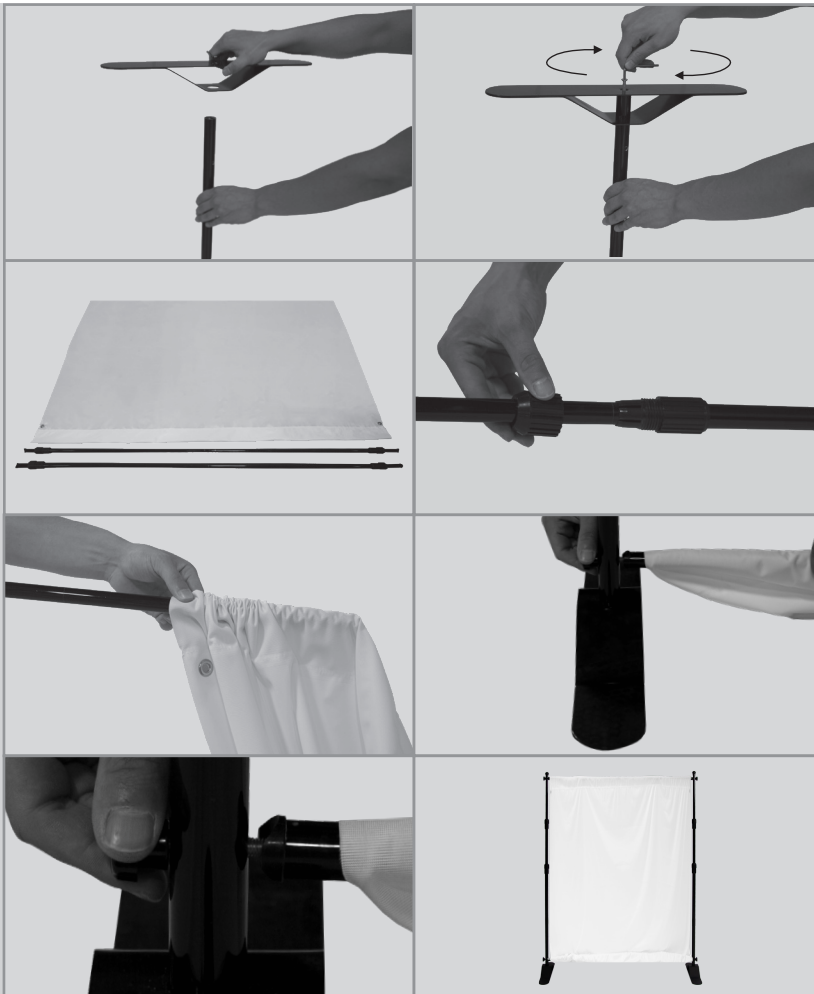
ASSEMBLY HARDWARE



- A. Vertical Aluminum Poles
- B. Elastic Banner Cords
- C. Horizontal Poles
- D. Metal Feet
- E. Allen Wrench
- F. Flat Head Screws



ASSEMBLY



NOTE – It's recommended two people assemble the display on a clean surface.

1. Assemble the vertical aluminum poles.
 - a. Insert a vertical aluminum pole (A) into the opening on one of the metal feet (D).
 - b. Place one of the flat head screws (F) into the underside of one of the metal foot.
 - c. Rotate clockwise with Allen wrench (E) to tighten.
 - d. Repeat for the other foot.
3. Determine length of horizontal poles.
 - a. Spread out the print on the ground until the pole sleeve is completely flat.
 - b. Expand the horizontal poles until they are 2 inches longer than the pole sleeve.
 - c. Secure the poles by tightening the notches at the determined points. Make sure both horizontal poles are the same length.
4. Displaying the print.
 - a. Insert one of the horizontal poles into the bottom pole sleeve.
 - b. Attach the horizontal pole to the bottom of each of the vertical poles by securing it into place with 2 screw knobs. Repeat for top pole.
 - c. Extend vertically by untightening the vertical poles and expanding until desired height is achieved.
 - d. Retighten when print is taut.
 - e. Slide an elastic banner cord (B) through a grommet and then secure. Repeat for other grommets.

DISCLAIMER: When using this product outside, place at least 25lb of weight (equivalent to 1 PVC Water Weight 2gal filled) on each foot. Do not display this product in extreme winds and/or thunderstorms. User must read and observe assembly instructions. If this is not done correctly it may result in damage to the unit, injury, or death, and all warranties will be void. All warranties will be void if the hardware is used with any banner not produced by us.

