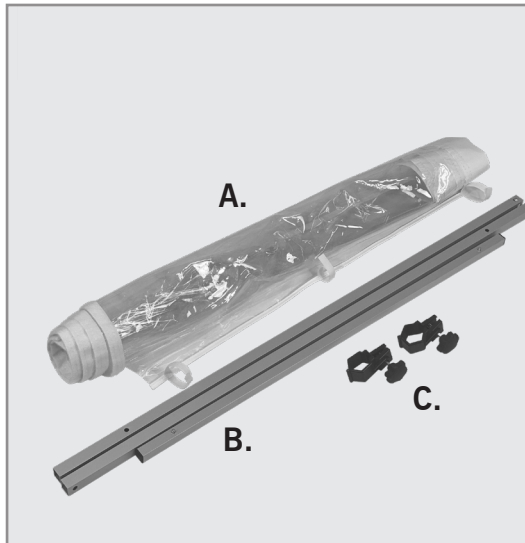


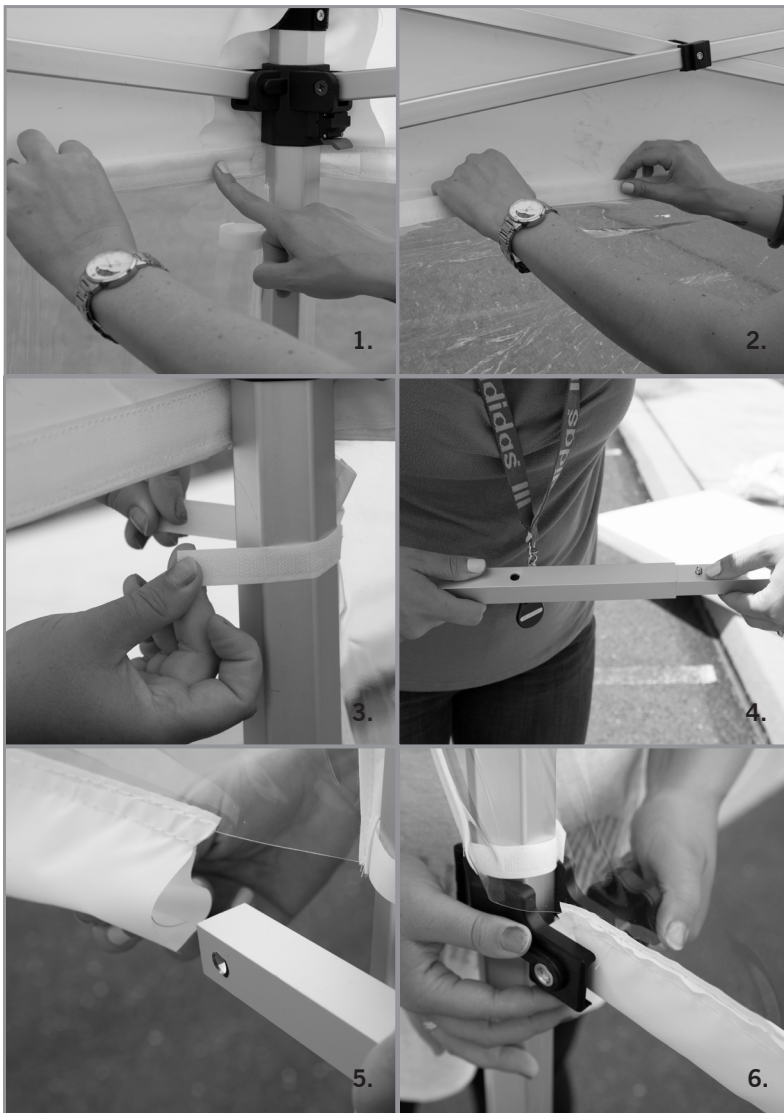
ASSEMBLY HARDWARE



- A. Clear PVC shield
- B. Aluminum poles
- C. Tent clamps



ASSEMBLY



1. Line the loop fastener on the shield with the hook fastener on the valance.
2. Start on one side of the valance and work the hook and loop together down to the other end.
3. Once the shield is attached to the valance, attach the hook and loop straps on the side of the shield around the tent legs.
4. Connect the 3 aluminum poles together. The middle pole will have a spring button on both ends. The other 2 poles will have 1 hole drilled on one end and 2 holes drilled on the other end. These 2 holes will be on different sides than the other hole. The spring button attaches to the end with only 1 hole. The end with 2 holes will attach to the clamps.
5. When the pole is fully assembled, carefully feed the pole through the pole pocket at the bottom of the shield.
6. Attach the pole to the tent leg with the clamp set. Now your tent safety shield is ready to use!