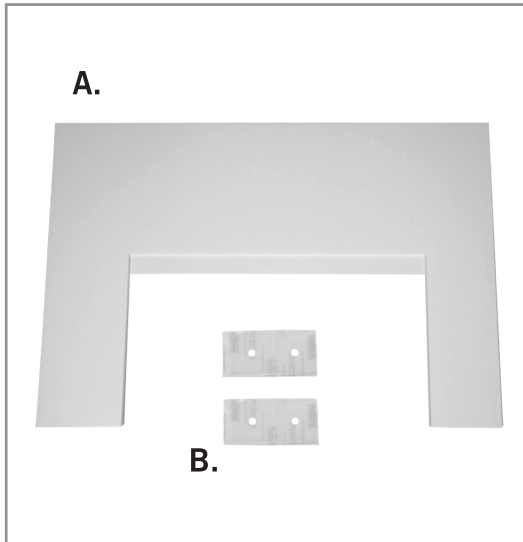


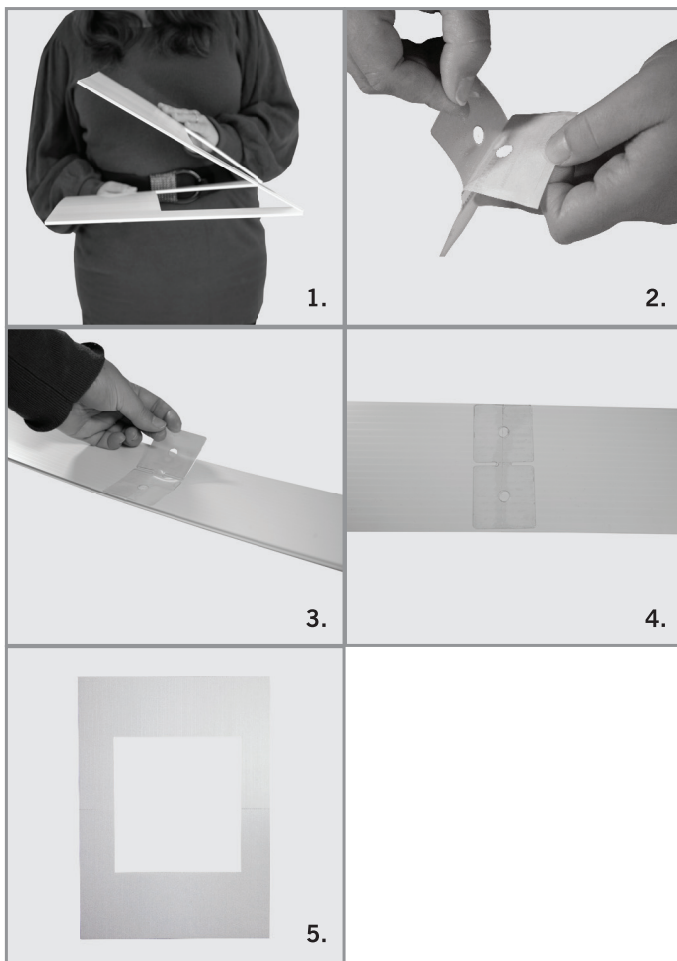
ASSEMBLY HARDWARE



- A. Foam Board
- B. Adhesive Tab



ASSEMBLY



1. Remove the protective film from both sides of the plastic shield.
2. Pop out the rectangular cut-outs from each side.
3. Grab the foam strip and remove the backing to expose the sticky side.
4. Line up the foam padding between the rectangular cut-outs.
5. Place the bottom edge of the foam padding onto the shield. Start at the bottom edge and work your way up. Press firmly until the padding is completely adhered to the shield.