

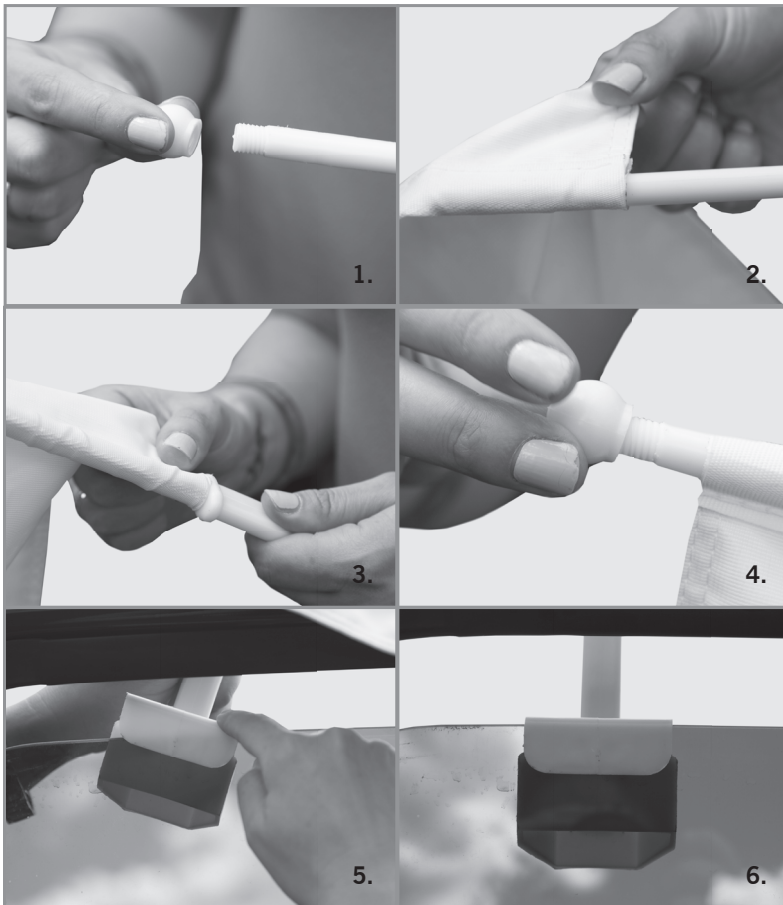
ASSEMBLY HARDWARE



A. White PVC pole with screw cap



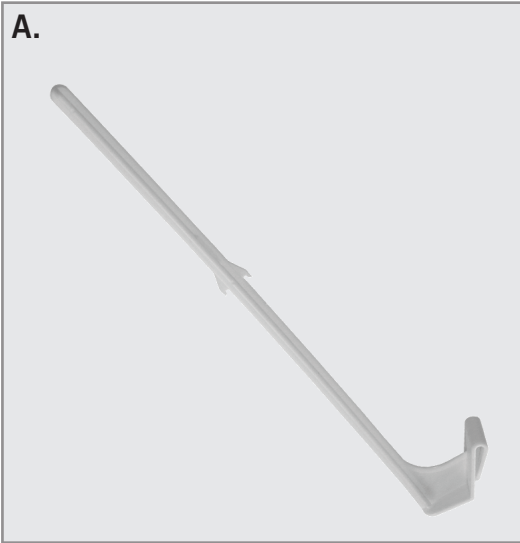
ASSEMBLY



1. Twist the cap off the pole.
2. Open the pole sleeve and begin to insert the pole.
3. Pull the flag all the way down the pole. Raised teeth will help keep the flag in place.
4. Once the flag is in place, twist the cap back on the pole.
5. Slightly open your window and gently push the hardware onto the window.
6. Once secure, the hardware will be flush with the window. You can now roll the window all the way up.

ASSEMBLY HARDWARE

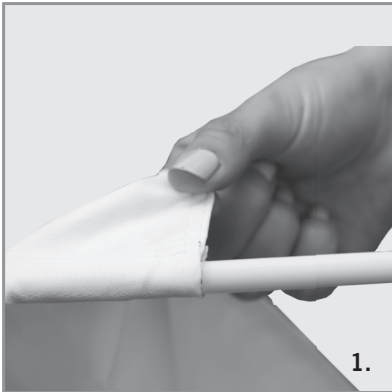
A.



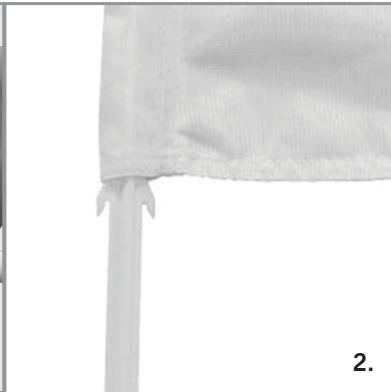
A. White PVC pole



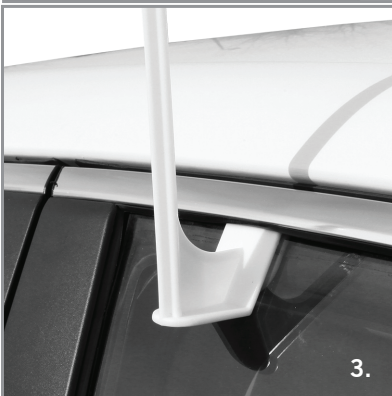
ASSEMBLY



1.



2.



3.



4.

1. Open the pole sleeve on the print and insert the pole.
2. Pull the flag all the way down the pole until it reaches the raised teeth.
3. Slightly open your car window and gently push the hardware onto the window. Once the car flag is secured to the window, close the window.
4. The economy car flag is now ready to use.