

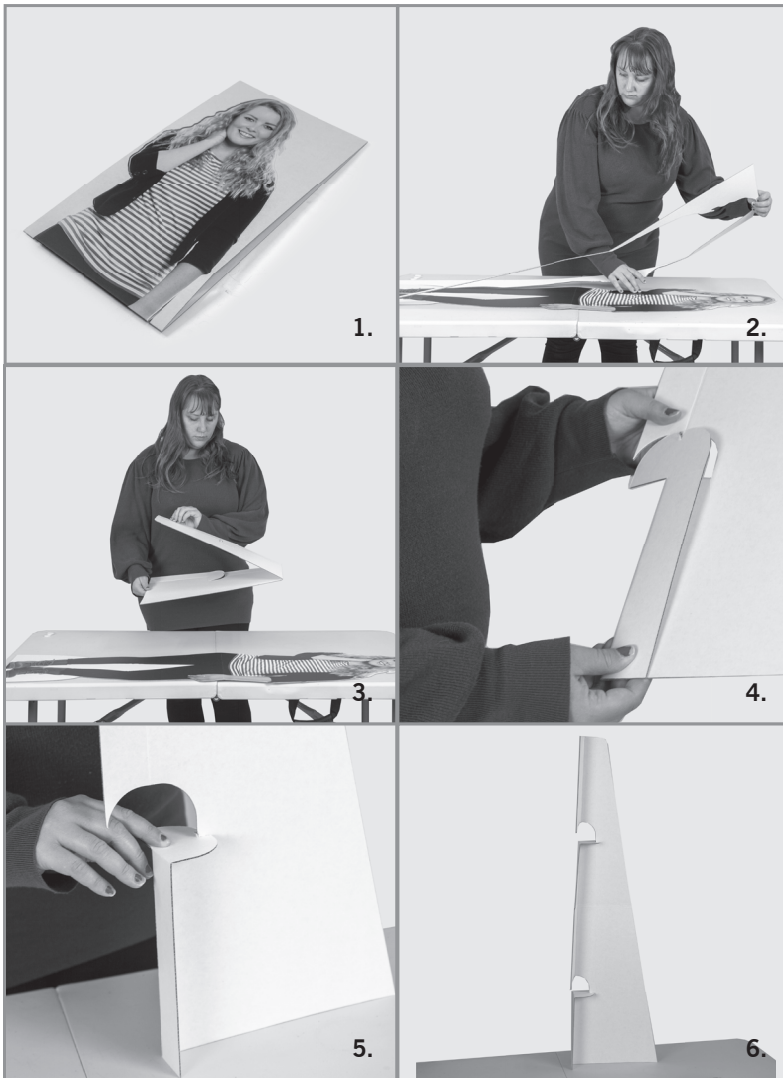
## ASSEMBLY HARDWARE



- A. Standee
- B. Easel
- C. Hook-and-loop tabs

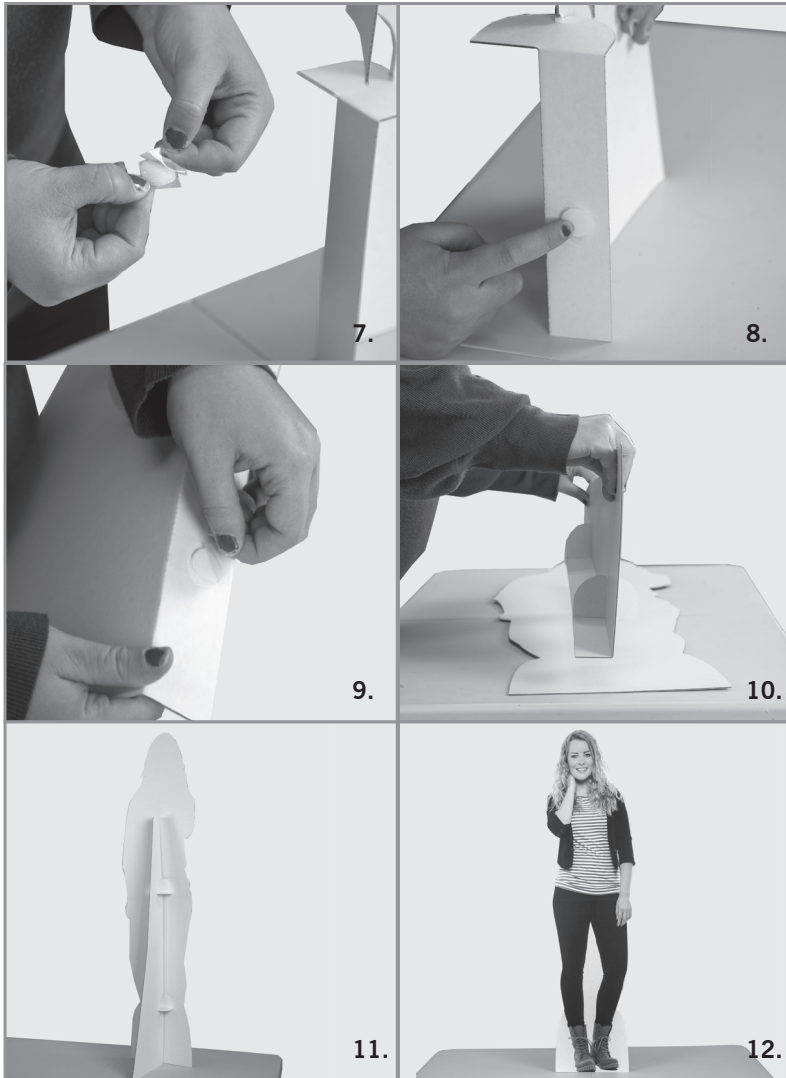


## ASSEMBLY



1. The standee ships folded in half with the frame around it for safety.
2. Unfold the standee and carefully remove the perforated frame surrounding it.
3. Carefully unfold the easel.
4. Gently fold the creases on the easel.
5. Depending on the standee size there will be 1 or 2 supports. Fold the support down until they are secure.
6. With the support(s) locked in place, the easel will stand on its own.

## ASSEMBLY



**\*Disclaimer: Recommended for indoor use or outdoor areas with no wind. Windy conditions will cause the cardboard cutout to topple over.**