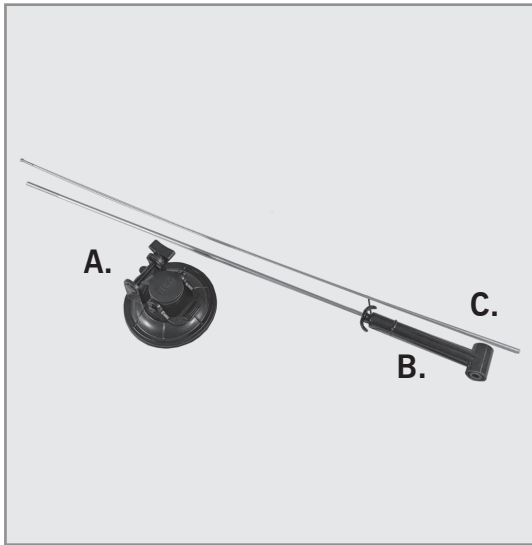


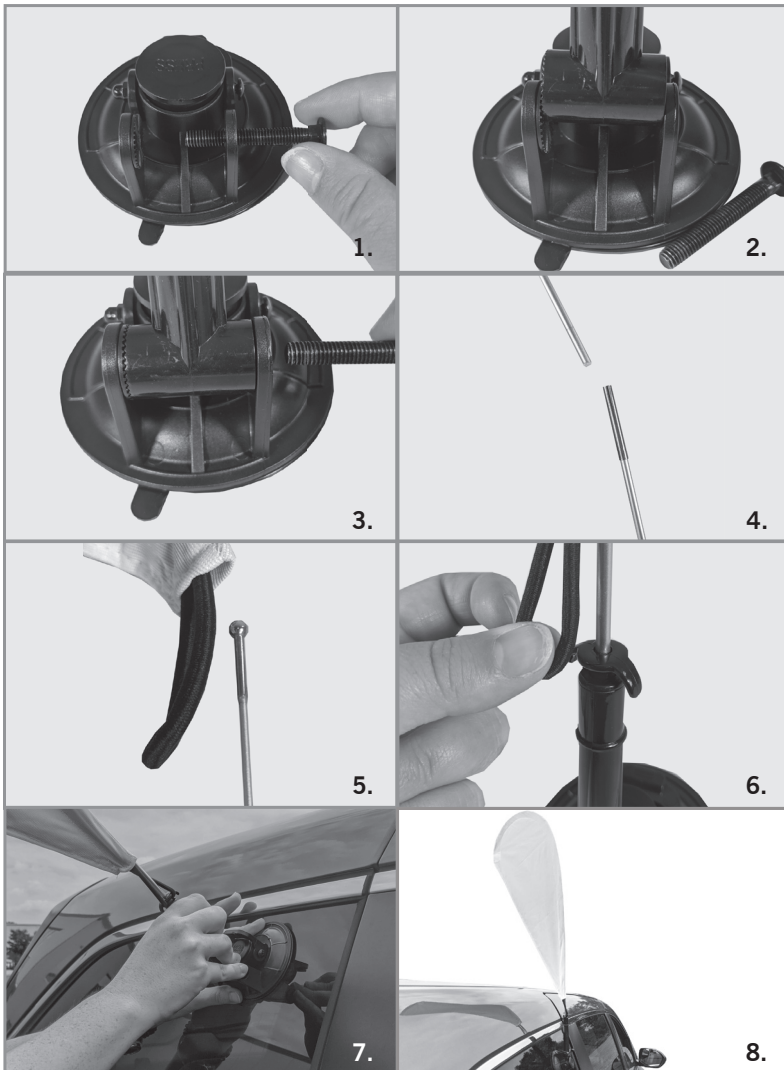
## ASSEMBLY HARDWARE



- A. Suction Cup
- B. Bottom Pole
- C. Top Pole



## ASSEMBLY



1. Unscrew the screw in the suction cup.
2. Push the base of the bottom pole into the suction cup.
3. Once the pole is at the angle that is desired, place the screw back in to to secure the pole to the suction cup.
4. Slip the top pole into the bottom pole.
5. Insert the assembled pole set into the print's pole sleeve.
6. Pull the print all the way down the pole and connect the tab to the clamp, located at the bottom of the pole.
7. Once the feather flag is set up on the suction cup place it on your car.
8. The suction cup car feather flag is ready to be used.