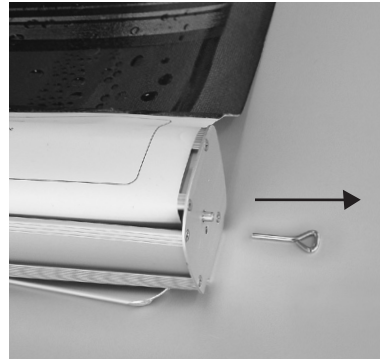


PRINT INSTALLATION

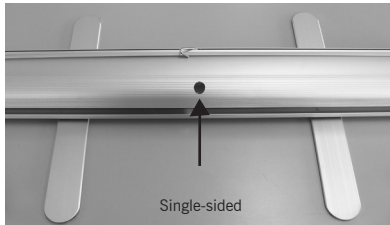


1. Keep print(s) taut while installing into the clamping rail(s). The front of the print(s) must face the same direction as the front of the clamping rail(s). Insert end caps.

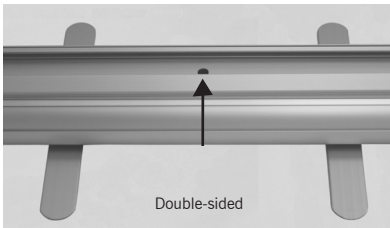
2. Line the bottom of the print(s) up with the adhesive on the insert of the base. The front of the print must face up.

3. Hold the print tightly while removing locking pin. Allow print to roll into the base slowly. For DS model, be sure to do one print at a time after locating the two pins on either side of the base.

ASSEMBLY AFTER PRINT INSTALLATION



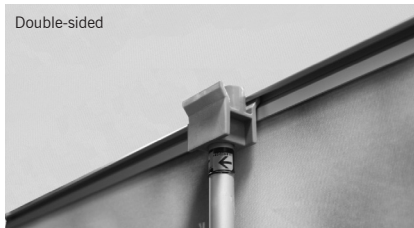
Single-sided



Double-sided



Single-sided



Double-sided

1. Locate the feet under the base and slide them straight out. Assemble the 3-part pole and place into the socket found on the top center of the base.

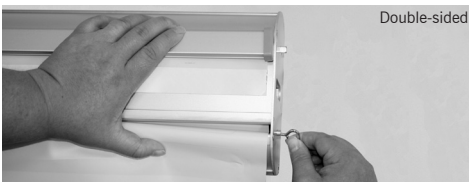
2. Pull clamping rail with print out of the base and insert the 3-part pole into the notch of the clamping rail. For DS model, repeat with other print.

NOTE - Failure to insert the pole completely into the base may result in damage to the base and cause the banner to lean forward.

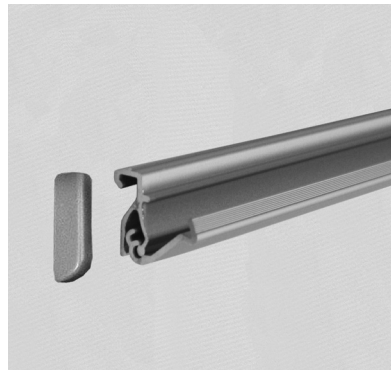
REMOVAL OF PRINT



Single-sided



Double-sided



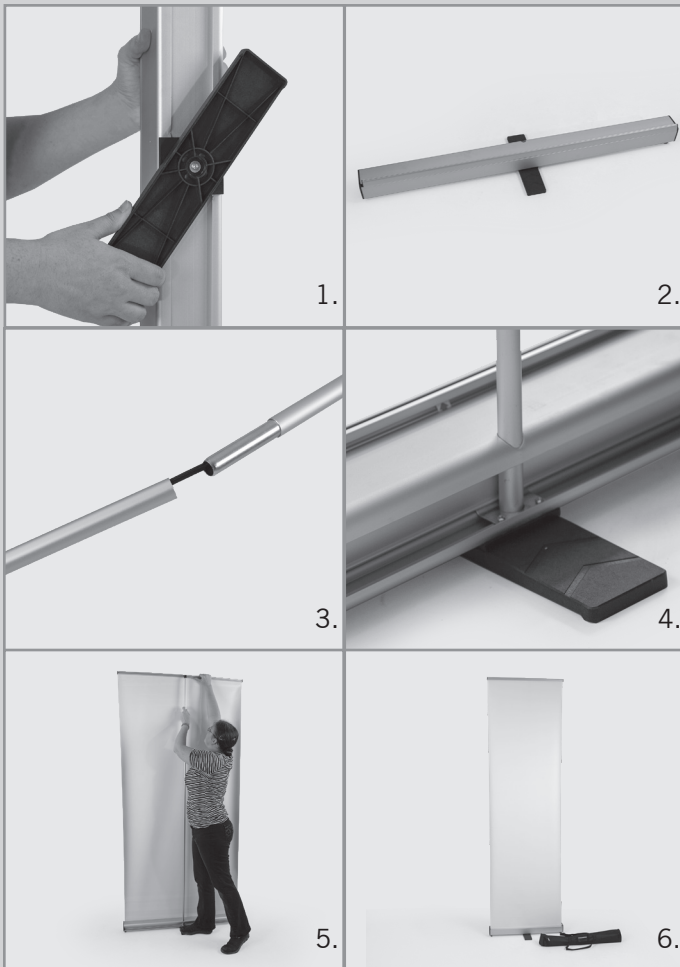
1. Pull clamping rail and print out of the base. Insert the locking pin into the small hole located on the side of the base. For DS model, repeat with other print and corresponding hole.

2. Remove the end caps from the clamping rail(s) and take out the print(s). Pull the print(s) off the adhesive on the base. If installing a new print, replace the adhesive.

ASSEMBLY HARDWARE

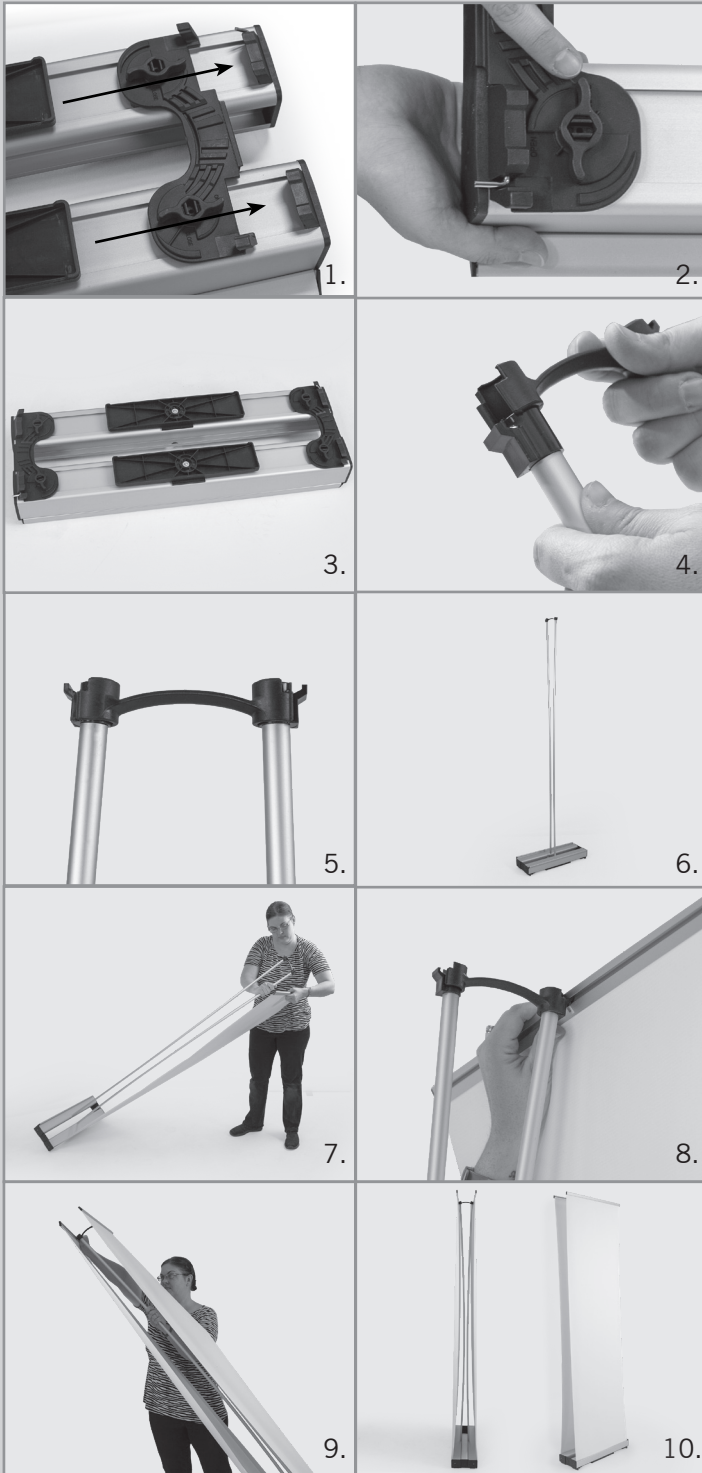


ASSEMBLY



1. Fold out stabilizing foot until it locks into place.
2. Set the entire roll up firmly on the ground.
3. Assemble the support pole by connecting the segmented pole sections.
4. Slide the support pole through the hole on the back of the roll up base and place it into the slot at the bottom of the base.
5. With clean footwear, step on the folded-out foot and pull the up until it meets the clamping rail. Connect the clamping rail to the support pole by sliding the lip of the rail (in the center) over the end of the support pole.
6. Your roll up banner is now assembled.

ASSEMBLY OF DOUBLE-SIDED STANDARD



1. Place 2 roll up bases upside down side by side. Slide the connecting hardware across the bottom of both roll up bases until it slides into place.
2. Push switch to "closed".
3. Repeat for other side.
4. Attach connector to one of the support poles.
5. Attach connector to remaining support pole.
6. Slide support poles into backs of roll ups.
7. Pull banner up until it is equal to support pole. Angle the display for this and the next step.
8. Connect the banner clamping rail to the support pole by sliding the lip of the rail (in the center) over the end of the support pole.
9. Repeat to connect the remaining banner.
10. Your double-sided banner is now assembled.

DELUXE RETRACTABLE BANNER

Assembly Instructions | R1.091417

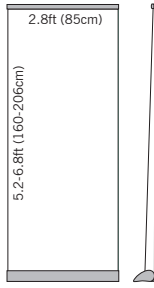
Retractable Stand Plus 24"



SET INCLUDES

- 1 Aluminum base
- 1 4-part pole
- 1 Clamping rail
- 1 Carrying Case

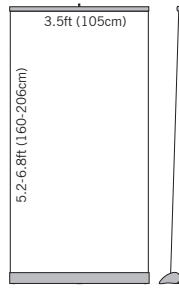
Retractable Stand Plus 31"



SET INCLUDES

- 1 Aluminum base
- 1 2-part pole
- 1 Clamping rail
- 1 Carrying Case

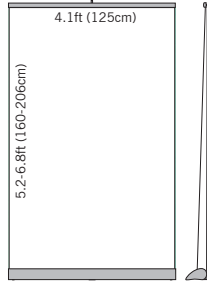
Retractable Stand Plus 39"



SET INCLUDES

- 1 Aluminum base
- 1 2-part pole
- 1 Clamping rail
- 1 Carrying Case

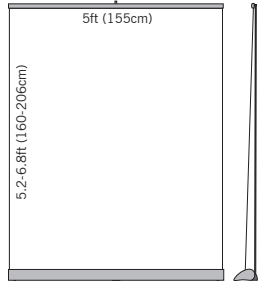
Retractable Stand Plus 49"



SET INCLUDES

- 1 Aluminum base
- 2 2-part poles
- 1 Clamping rail
- 1 Carrying Case

Retractable Stand Plus 59"

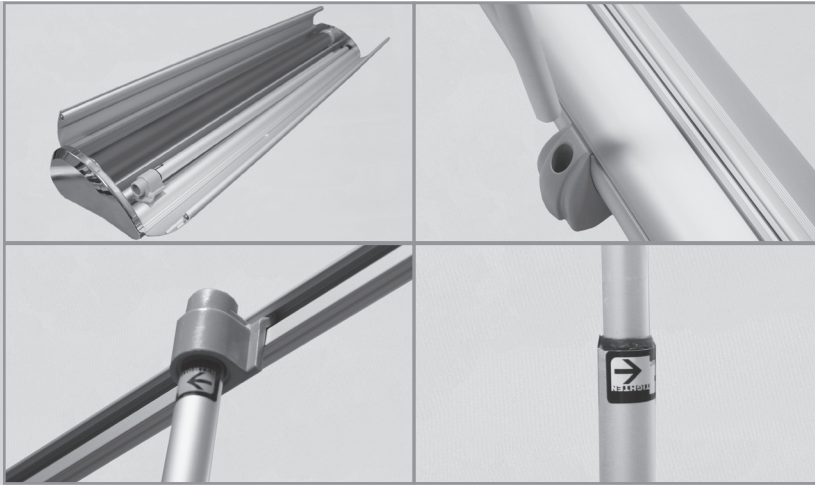


SET INCLUDES

- 1 Aluminum base
- 2 2-part poles
- 1 Clamping rail
- 1 Carrying Case

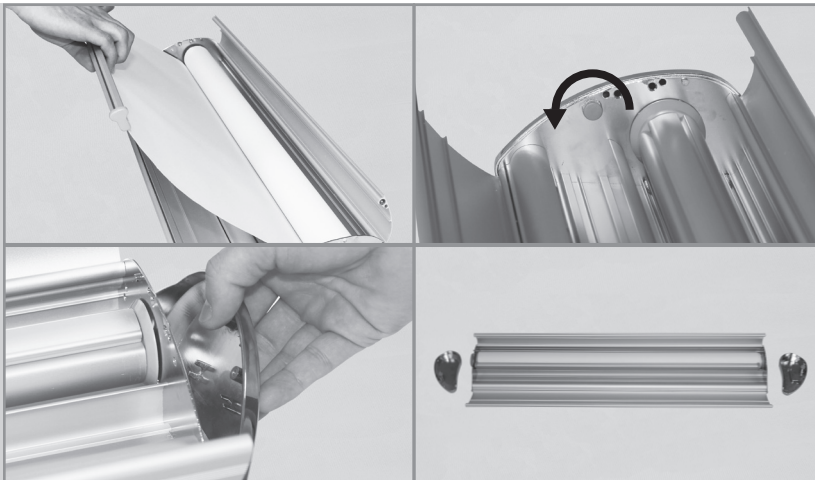


ASSEMBLY



1. Open the top two hinged covers on the base and remove the 2-part pole(s).
2. Unfold and assemble the 2-part pole(s). The bottom of the 2-part pole slides into the round socket located at the back of the base unit.
3. Grasp the top clamping rail and unroll the print. Position the top clamping rail over the notch(es) on the 2-part pole.
4. Adjust the height of the print by twisting the 2-part pole(s) into the unlock position and push upward. When print is at the desired height, tighten the 2-part pole(s) by twisting into the lock position.

CHANGING PRINTS & NEW PRINT ASSEMBLY



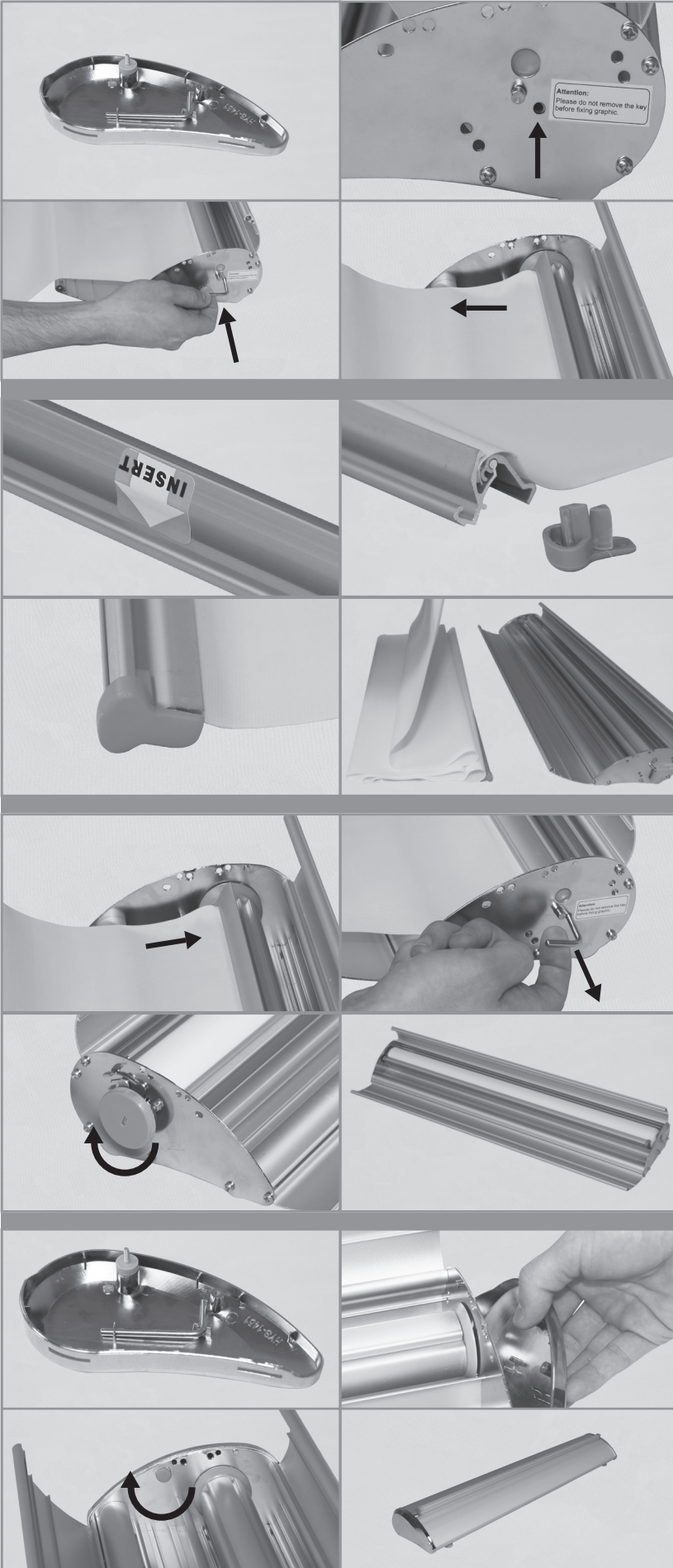
1. Pull the top clamping rail out slightly so the top 2 hinged covers on the base can be opened. Remove 2-part pole.

If new print assembly, remove packaging and open top 2 hinged covers to remove 2-part pole.
2. Locate the 2 chrome end caps that are attached to the base. Inside the base there is a plastic thumb screw on each side. Remove each chrome end cap using the plastic thumb screw. Store the plastic thumb screws on the magnets inside each chrome end cap.

If new assembly, skip to **STEP 5**.

DELUXE RETRACTABLE BANNER

Assembly Instructions | R1.091417



3. On the right chrome end cap, pull out the locking pin. On the right side of the base, locate the locking pin hole. The internal clamping rail will have a hole that needs to line up with the locking pin hole. Pull the print out all the way and line up both holes. Once the holes are lined up, insert locking pin.

4. Open internal clamp rail to release bottom of the print.

5. Take the top clamping rail and remove the 2 plastic end caps so it can be opened. If changing prints, remove the old print. Position top clamping rail so the "insert" sticker is read upside down and the arrow pointing towards you.

6. Lay the new print down with the backside facing up. Insert top of print evenly into the top clamping rail. Press down firmly to close and secure print. Return each plastic end cap to their respective sides.

7. Once the top clamping rail has been installed on the new print, prepare the print by "z-folding" it. This will allow the print to be rolled up with ease. (Remember that the print needs to remain with backside facing up!)

8. Open internal clamping rail located within the base if you haven't already. Place bottom of print evenly inside the internal clamp rail. Press firmly to close the internal clamping rail to secure print.

9. Place hand on internal clamping rail. On the right side of the base, pull out the locking pin. Print will begin to roll up. Keep print even when being rolled onto the internal clamping rail.

If new or if print fails to fully roll up on the internal clamping rail, locate the tension wheel on the left side of base. Turn tension wheel clockwise until print is fully rolled up. Proceed to turn the tension wheel an additional 15-18 times to build tension. Test the tension by pulling print out and seeing if print rolls back in.

10. On the right chrome end cap, place the locking pin into the prongs. Reattach chrome end caps starting from bottom to top. Screw in the plastic thumb screws to secure the chrome end caps.

11. Place the 2-part pole back into the base. Lift the top clamping rail up so you can close the top 2 hinged covers on base. Lower top clamping rail back down.

DOUBLE-SIDED DELUXE RETRACTABLE BANNER

Assembly Instructions | R1.091417

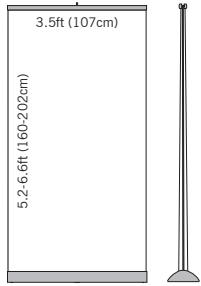
Roll Up 31" Plus DS



SET INCLUDES

- 1 Aluminum base
- 1 2-part pole
- 2 Clamping rails
- 1 Carrying Case

Roll Up 39" Plus DS



SET INCLUDES

- 1 Aluminum base
- 1 2-part pole
- 2 Clamping rails
- 1 Carrying Case

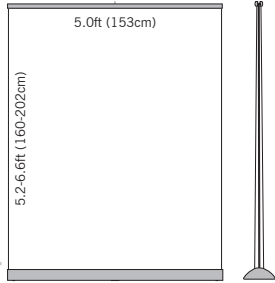
Roll Up 47" Plus DS



SET INCLUDES

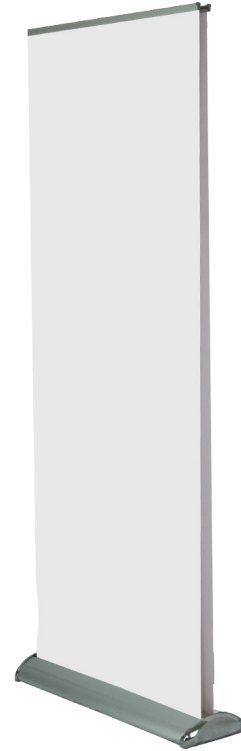
- 1 Aluminum base
- 2 2-part poles
- 2 Clamping rails
- 1 Carrying Case

Roll Up 59" Plus DS

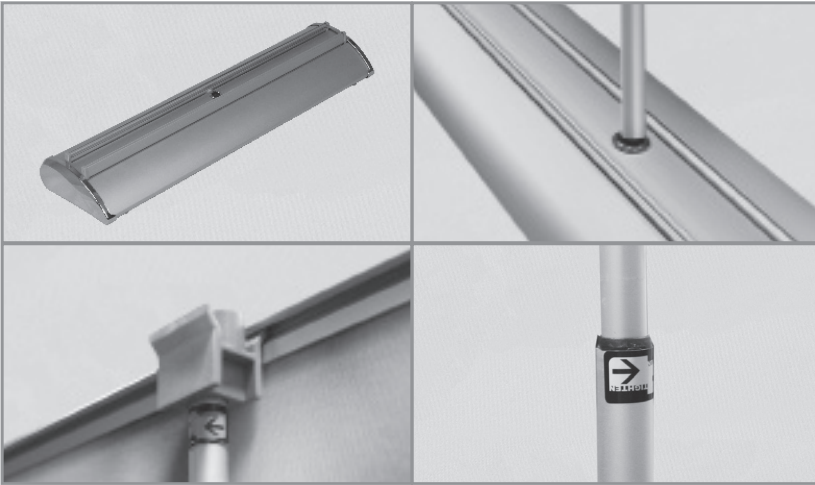


SET INCLUDES

- 1 Aluminum base
- 2 2-part poles
- 2 Clamping rails
- 1 Carrying Case



ASSEMBLY



1. Locate the 2-part pole, unfold and assemble.
2. Place bottom of 2-part pole into the round socket located in the center of the base.
3. Grasp one of the top clamping rails and unroll the print. Position the top clamping rail over the notch on top of the 2-part pole. Once the print is secured, repeat with the second print.
4. Adjust the height of the prints by twisting the 2-part pole into the unlock position and push upward. When print is at the desired height, tighten the 2-part pole by twisting into the lock position.

CHANGING PRINTS & NEW PRINT ASSEMBLY



(NOTE – It is not recommended to change prints once a set of prints are already installed on this display system!)

1. Remove packaging and set 2-part pole aside.
2. Take the base and flip upside down. On each side of the base is a chrome end cap secured by screws. Remove each screw (one for each chrome end cap) with a Phillips screw driver. Flip the base back over and remove both chrome end caps.

DOUBLE-SIDED DELUXE RETRACTABLE BANNER

Assembly Instructions | R1.091417



3. Now take the top clamping rails and remove the 2 plastic end caps so it can be opened. Position top clamping rail so the "insert" sticker is read upside down and the arrow is pointing towards you. Lay the print down with the backside facing up. Insert top of print evenly into the top clamping rail. Press down firmly to close and secure print. Return each plastic end cap to their respective sides. Repeat this step with the 2nd print/clamping rail.
4. On the base there will be 2 white adhesive strips. Attach the front print to the front adhesive strip (The front of the base is the side that is gradually tapered versus the more rounded side) following the instructions printed on there. Repeat step for the back print.
5. Place one hand on the front print. On the left side of base is a locking pin. The bases are pretensioned so once the locking pin is removed the print will fly into the base if print is not held down. Remove locking pin and slowly lower print evenly into the base. Secure locking pin in the prongs within the left cap.
6. Repeat the same process with back print, with the locking pin located on the right side of base. Secure the back locking pin on the 2 prongs in the right chrome end cap.
7. Once both prints have been lowered into the base, replace both chrome end caps to their respective sides. Flip base upside down so you can replace each screw to each side to secure the chrome end caps.