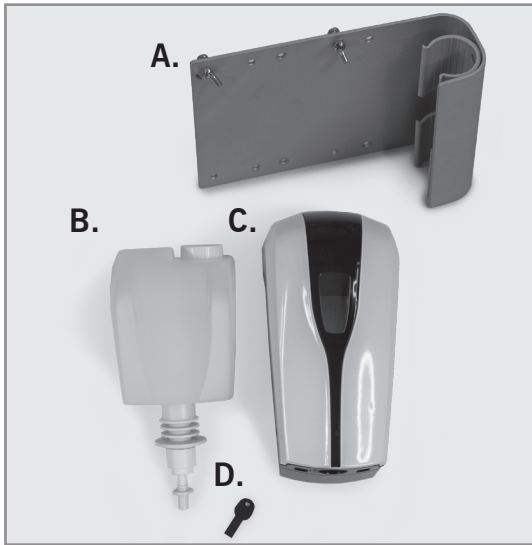
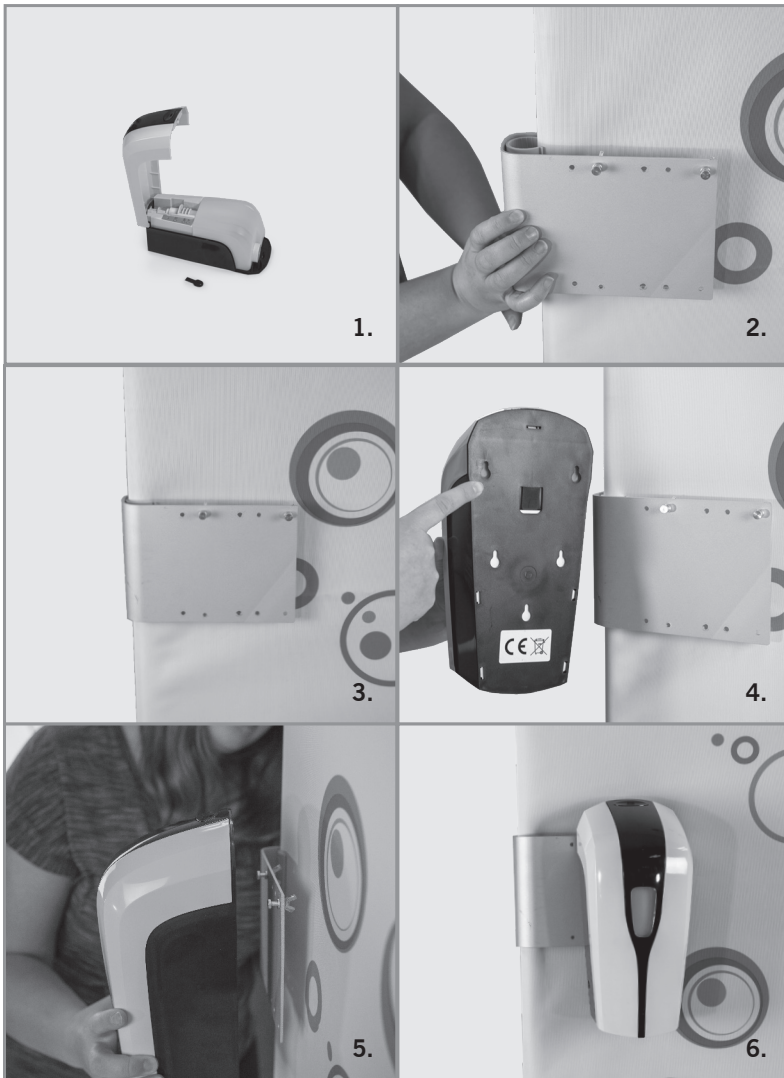


ASSEMBLY HARDWARE



ASSEMBLY



1. Slide the key into the top of the dispenser and gently pull the top of the dispenser down. Pull the sanitizer bottle out to fill. Once filled, close the dispenser.
2. Attach the metal clamp, over the print, to either the left or right side of the tension display.
3. Make sure the metal clamp is secure on the tension frame.
4. Locate the screw hanging holes on the back of the dispenser.
5. Line the screw hanging holes up with the screws on the metal clamp and attach the dispenser to the metal clamp.
6. The dispenser is now ready to use on the tension display.