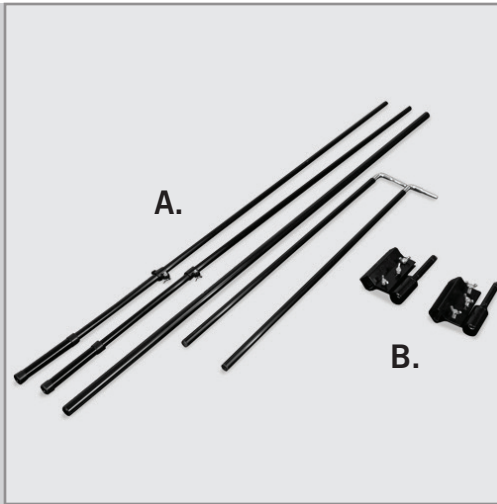


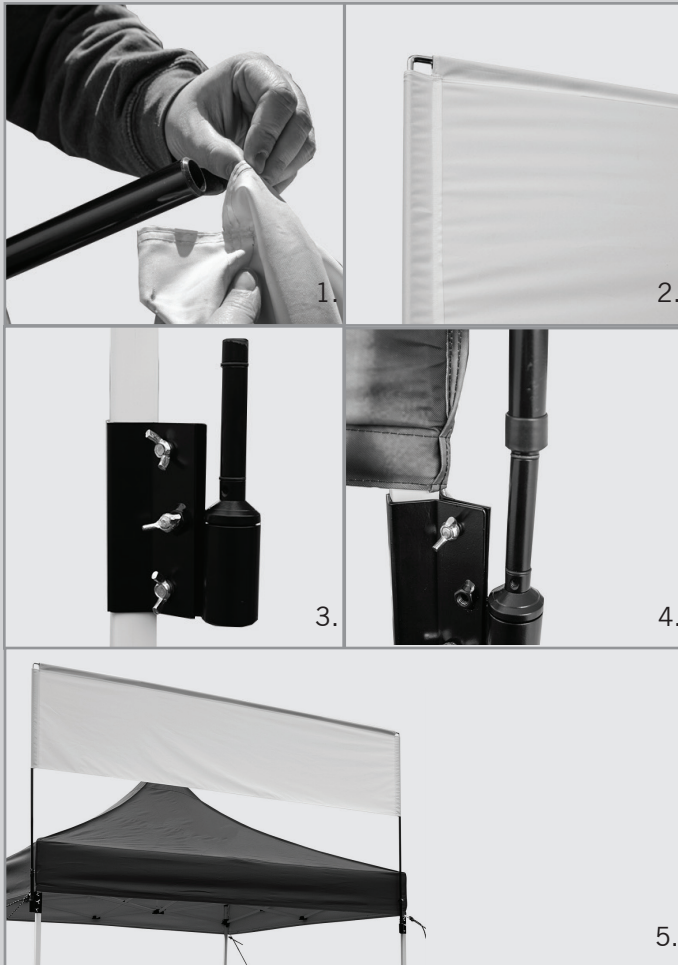
ASSEMBLY HARDWARE



A. Tent Billboard Frame
B. Metal Clamps with Thorns



ASSEMBLY FOR SINGLE BANNER STAND



Note: ADDITIONAL PEOPLE MAY BE REQUIRED FOR ASSEMBLY.

ASSEMBLY

1. Insert pole into the top pole sleeve of the banner.
2. Once the top pole is inserted, insert the side poles.
3. Unscrew the wing bolt and place the metal clamp around the tent leg. Once the clamp is around the leg, use the wing bolt to tighten the clamp.
4. Place each end of the billboard frame over the thorns and gently put the frame on the thorn.
5. Your tent billboard is ready!