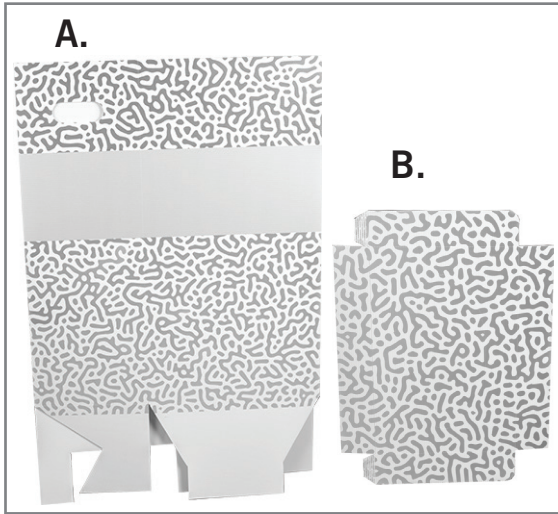
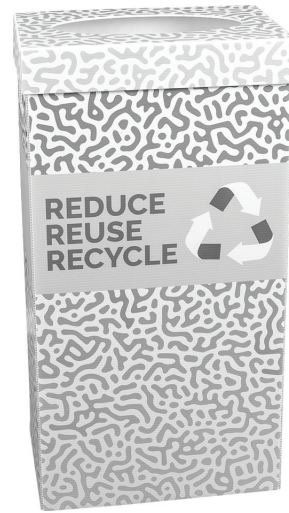


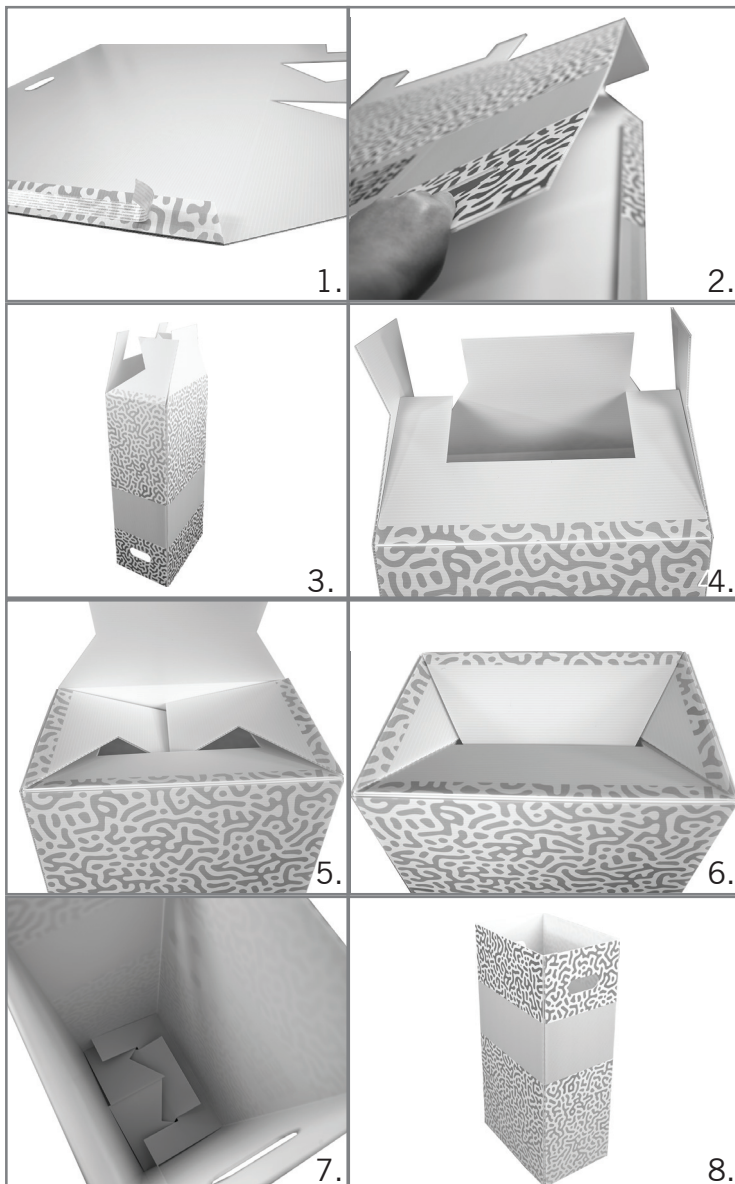
ASSEMBLY HARDWARE



A. DUMP BIN
B. OPTIONAL LID



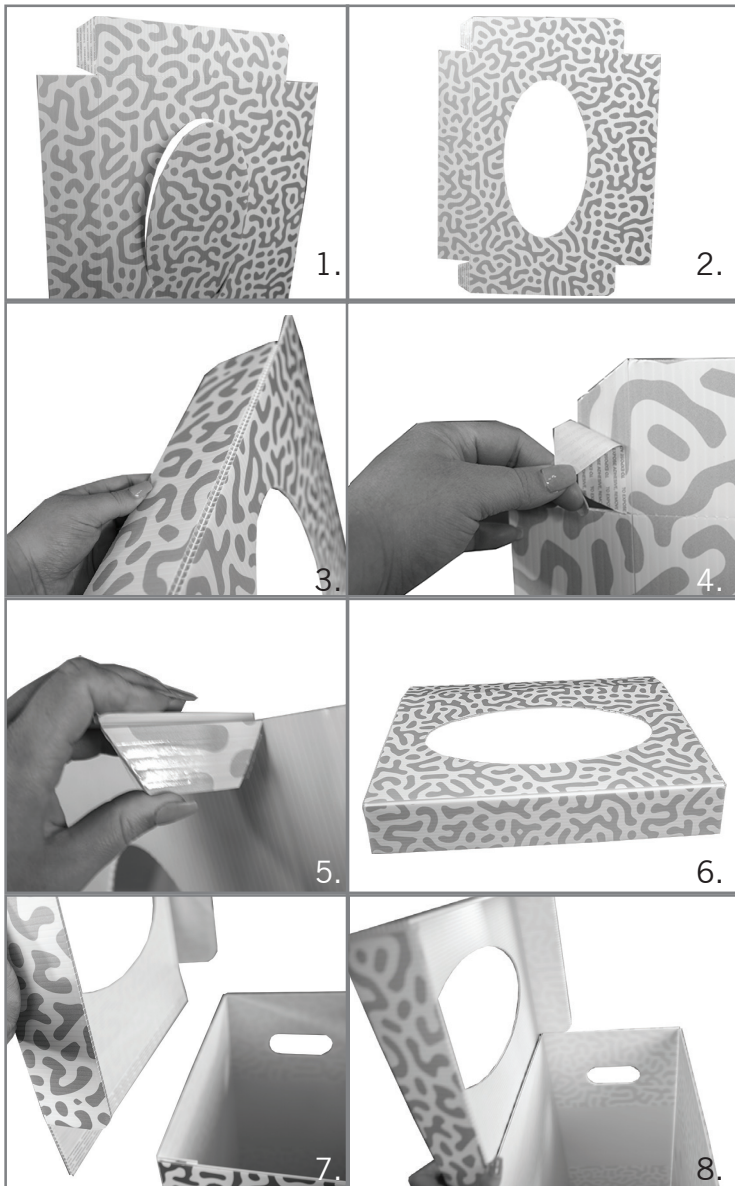
ASSEMBLY



ASSEMBLY

1. Dump bin ships flat. Carefully fold along the creases to prep the bin for assembly.
2. Remove the protective cover from the adhesive tape and fold the other side of the bin down. Press firmly to bind both sides together.
3. Flip bin upside down to close the bottom.
4. Fold the piece with the square in the middle down first.
5. Take the two side panels and tuck them into the bottom panel.
6. The last panel will then fold over the side panels and then tuck it into the bottom panel.
7. Turn the dump bin back upright and push down in the center of the bottom. That way it locks correctly.
8. Your dump bin is ready to use!

OPTIONAL LID ASSEMBLY



ASSEMBLY

1. If you received a lid without a hole, you could skip the first two steps. Carefully push the center of the lid.
2. Remove the center to create an oval hole in the lid.
3. Gently crease all edges to prepare to put the lid together.
4. Peel off the cover of the adhesive located on the small tab of the lid.
5. Bend the small tab and the larger tab and then hold them together so that the adhesive binds them together.
6. Repeat step 5 on the other side of the lid.
7. Remove the cover to the adhesive at the back of the lid and then line it up with the dump bin.
8. Your dump bin with lid is ready to go!