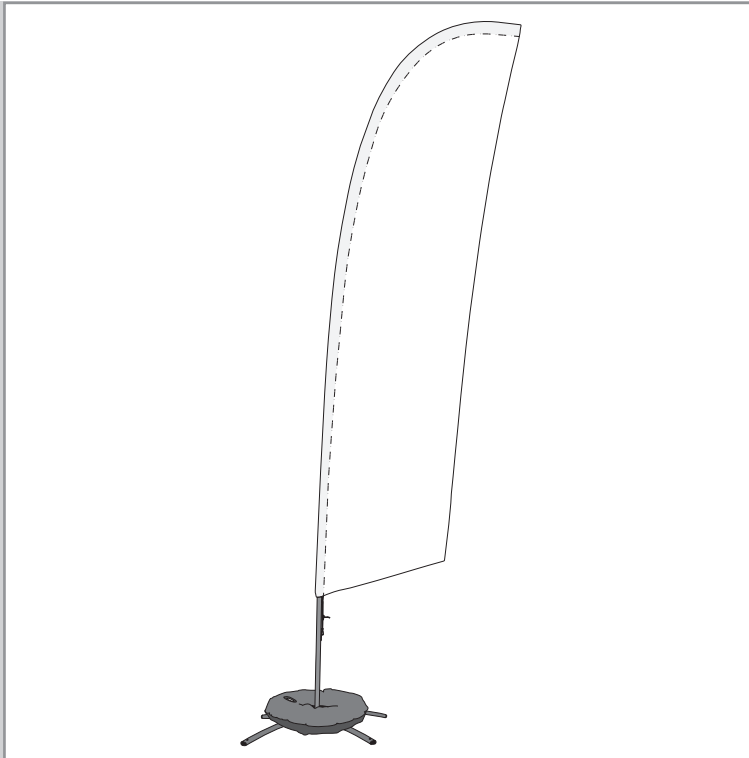


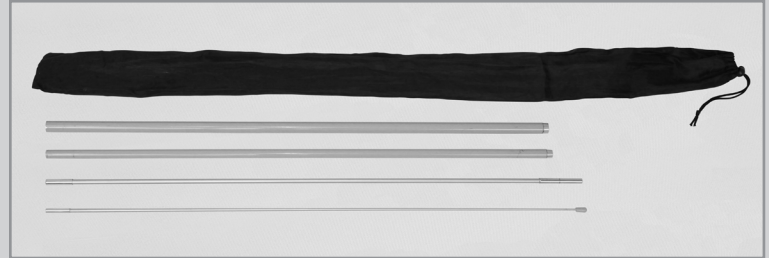
# Feather Flag Stock Design

R1.062419

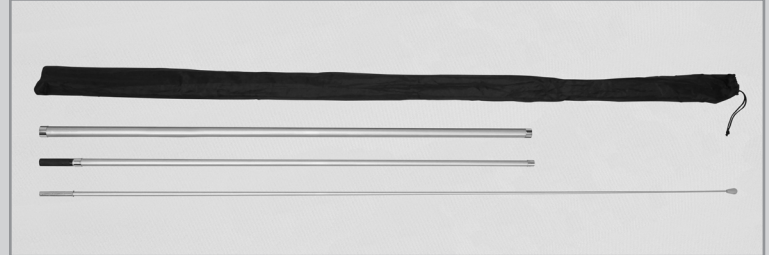
## ASSEMBLY HARDWARE



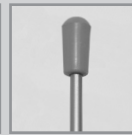
### Standard Pole Set



### Premium Pole Set



Clamp

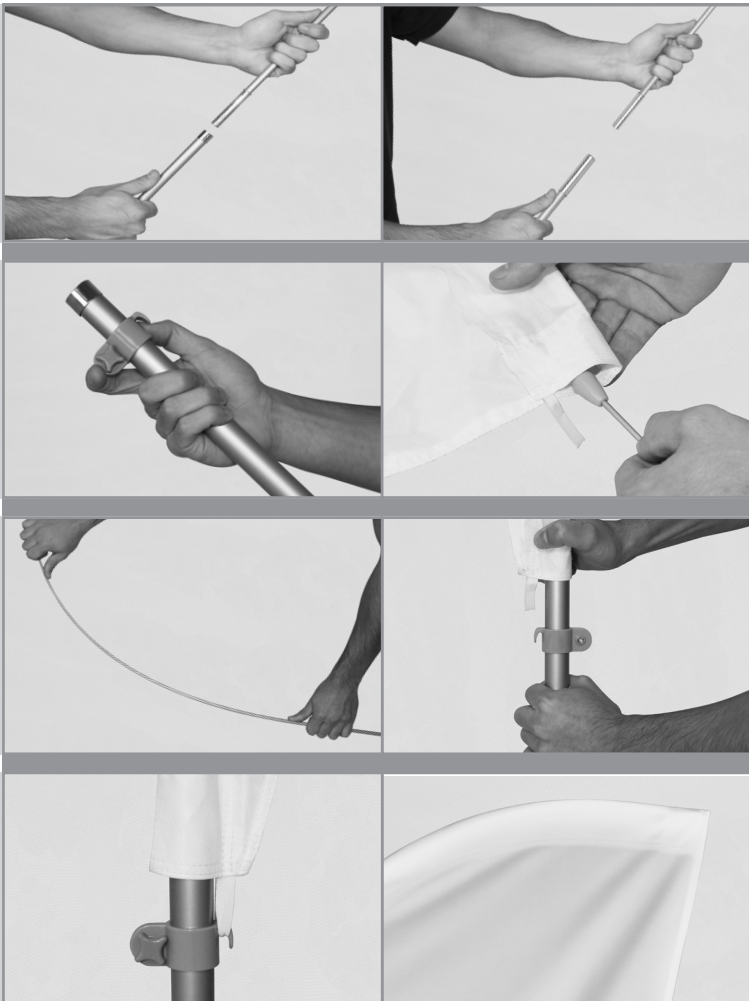


Tip

### Wind Speed Recommendations:

- Standard Pole Set:  
25-30mph (6bft)
- Premium Pole Set:  
55-63mph (10bft)

## ASSEMBLY



1. Assemble the pole set. The poles will be assembled from the largest diameter pole on the bottom to the smallest diameter pole at the top. There is only one correct order the poles can be assembled in.

2. Slide the clamp onto the bottom of the pole assembly (clamps are specific to the size of product).

3. Insert the assembled pole set into the print pole sleeve.

4. The flexible fiberglass pole will curve to the shape when the flag is fully taut. Pull the print and the pole sleeve downwards towards the clamp located on the bottom pole.

5. Tighten the clamp at a location where the print will be fully taut. Pull print taut and attach tab to the clamp.

6. Make sure the tip of the pole is fully inserted into the reinforced pole tip on the print. Mount the whole assembly using one of the available bases.

Do not fly this product in wind gusts exceeding what is listed below and/or thunderstorms. Standard pole set with single-reverse flag: up to 30mph. Premium pole set with single-reverse flag: up to 63mph. Do not use near overhead wires and allow a 4'-12' radius from base for flag clearance depending on size. User must read and observe assembly instructions. If this is not done correctly it may result in damage to the unit, injury, or death, and all warranties will be void. All warranties will be void if this product is used with any flag or hardware not produced by us.

